

6 Kirkwood Close, Chester, CH3 5JY

£1,100 Per Month

6 Kirkwood Close, Chester CH3 5JY

PDA estate agents are pleased to offer to market, this 2-bedroom newly refurbished semi-detached home in the quiet cul-de-sac of Kirkwood Close.

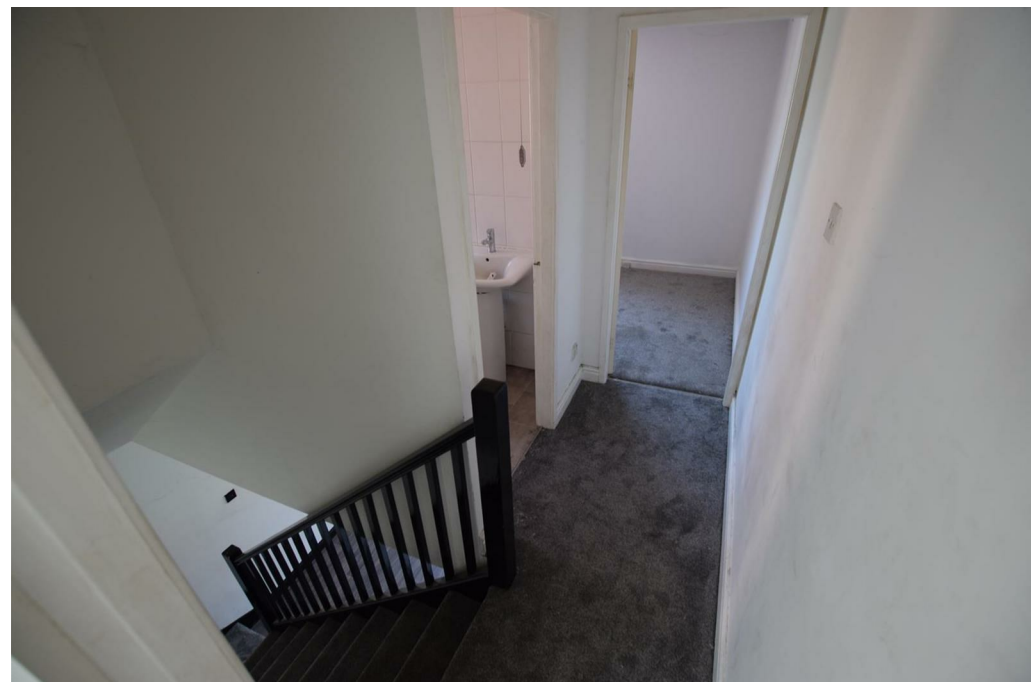
The property briefly comprises, the Entrance hallway, leading to the Living room and into the kitchen.

Upstairs, there is two good sized bedrooms with bathroom and storage cupboard.

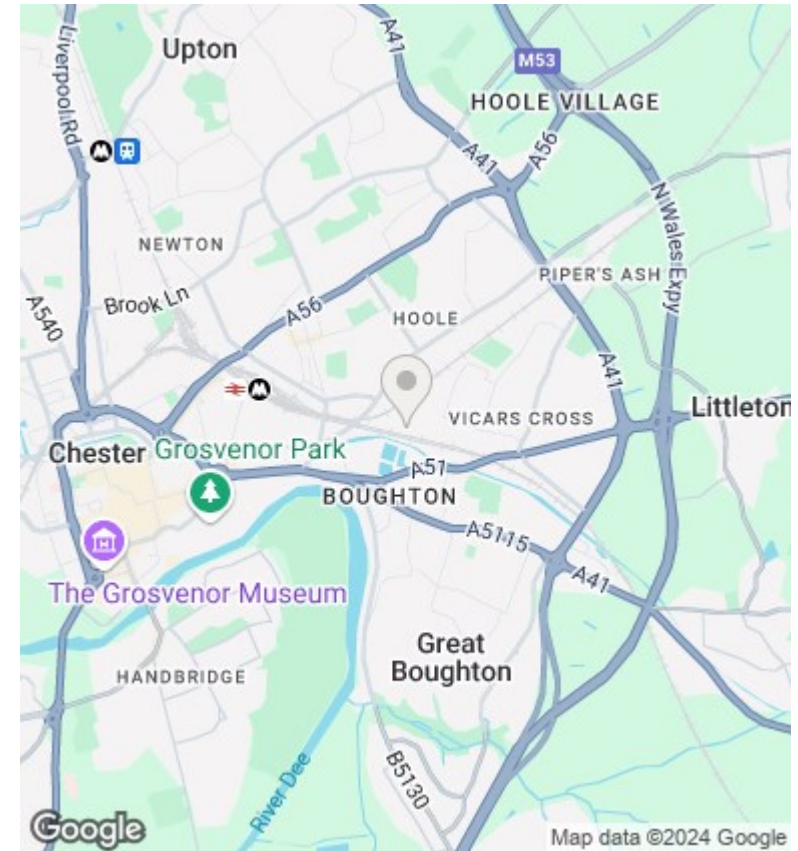
Externally there is a fair sized low maintenance garden to the rear and space for off road parking to the front.



Council Tax Band:







Directions

Viewings

Viewings by arrangement only. Call 01244 380 380 to make an appointment.

Council Tax Band

Energy Efficiency Rating		
	Current	Potential
<i>Very energy efficient - lower running costs</i>		
(92 plus) A		
(81-91) B		
(69-80) C		
(55-68) D		
(39-54) E		
(21-38) F		
(1-20) G		
<i>Not energy efficient - higher running costs</i>		
England & Wales	EU Directive 2002/91/EC	